



OBAKU DENMARK

FULL COLLECTION 2011

DANISH WATCH DESIGN ZEN PHILOSOPHY



It's appearance is beautiful in a simple, yet elegant way. Just below the surface you sense the wisdom of a thousand years integrated in the thought process, which created it. It is an Obaku Denmark watch.

Combining the long traditions for minimalist design in Scandinavia with the Zen tradition of omitting all superfluous details, Obaku Denmark is a unique concept, which asks you to forget time and let the moment rule.

The philosophy of Obaku

The idea that there should be a sense of calm and balance in the items we use to

adorn ourselves is what gave birth to the Obaku collection. In Asia, Zen philosophies have given rise to a natural simplicity – in both thought and act. Obaku Denmark takes its name from a branch of Zen philosophy and has created a universe characterized by a sense of calm – free from all superfluous details.

The northern European countries have a long design tradition featuring functionality and simplicity of composition. Obaku Denmark has inherited the best from both these cultures, and has blended the simplicity found in both.

Simplicity is a lifestyle

An oasis of calm, balance and harmony in the midst of a world in constant

movement. Regardless of where on the planet we may be we all need our own personal paradise where we find pleasure in the small details. A soft curve, the spray from a wave or the sound of rustling leaves.

Merging two things in an artful way means getting rid of everything not really needed. Paring something right down to the bare essentials of simplicity and then giving it life, shape and texture. Obaku Denmark is an exclusive collection of watches with a focus on simple, serene design. This collection is backed by a philosophy of blending the two different traditions of simplicity found in the European and Asian cultures.

V139
Solid link



NEW V139GG1SG

V139 Gents

SIZE: W38 X H38 MM

This watch is extremely slim. With a case edge of less than one millimeter and a very slim total case thickness this watch will fit nicely under any shirt sleeve. The circular shape within the square look gives this watch a particularly soft yet masculine feel. A well rounded nature is suggested by the lack of sharp edges. It is a sophisticated watch which will make a statement.

DANISH WATCH DESIGN BY CHRISTIAN MIKKELSEN



V139GCBSC



V139GCISC



V139GBBSB

ULTRA SLIM DESIGN

CASE EDGE 1 MM

V139 GENTS | SOLID LINK



V139GBBRB

V139 Gents

SIZE: W38 x H38 MM

This watch is extremely slim. With a case edge of less than one millimeter and a very slim total case thickness this watch will fit nicely under any shirt sleeve. The circular shape within the square look gives this watch a particularly soft yet masculine feel. A well rounded nature is suggested by the lack of sharp edges. It is a sophisticated watch which will make a statement.

DANISH WATCH DESIGN BY CHRISTIAN MIKKELSEN



NEW V139GBBMB



V139GCIRB



NEW V139GCIRW



NEW V139GGIRB



NEW V139GGIRW

ULTRA SLIM DESIGN
CASE EDGE 1 MM

V139 GENTS | LEATHER STRAP & MESH BAND



V139LGIRW



V139LBRRB



V139LCIRB



V139LBBSB



V139LGISG



V139LCISB



V139 Ladies

SIZE: W28 x H28 MM

This watch is extremely slim. With a case edge of less than one millimeter and a very slim total case thickness this watch will fit nicely on any wrist. The contrast between the numbers and dial make it easy to tell the time, even though you may be delving in the beautiful integration of the strap to the case. A well rounded nature is suggested by the lack of sharp edges. It is a sophisticated watch which will make a statement.

DANISH WATCH DESIGN BY CHRISTIAN MIKKELSEN

ULTRA SLIM DESIGN

CASE EDGE 1 MM

V139 LADIES | LEATHER STRAP & SOLID LINK



DANISH WATCH DESIGN BY CHRISTIAN MIKKELSEN

V116 Unisex

SIZE: W 40 MM - H 40 MM

Although the size of the case is quite large, the watch seems delicate with its slim and slightly curved appearance. The round dial opening in the square design gives the watch an artistic expression. Details such as the graphics on the dial, the slim designer crown and the legs of the case add to the overall harmonic feeling of the design.



V116UCIRW



V116UCIRB



V116UBBRB



V116UCIRN



FORGET ABOUT TIME
LET THE MOMENT RULE

PURE FEMININE






 V146LGIRB




 V146LGIRR




 V146LGIRW



 V146LCIRB



 V146LCIRW



V146 Ladies

SIZE: Ø 27 MM

Simply round, light and elegant this watch represents the design philosophy "Less is more". The Italian leather strap elegantly flows into the case, leaving the watch as a small sculpture on your wrist. The two hands and the subtle hour markers on the dial enable you to tell the time, but keep the minimalistic design in focus.



DANISH WATCH DESIGN BY CHRISTIAN MIKKELSEN

V146 LADIES | LEATHER STRAP



V120LCIRE



V120LCIRP



V120LCIRW



V120LCIRB



V120LCIRX

V120 Ladies

SIZE: W 20.1 - H 29.1 MM

The curved, rectangular shape of the case ends in beautiful slim legs and gives this watch a very feminine appearance. The softly rounded crown and slim strap adds to the elegant, clean look. A three dimensional dial creates an image of depth and completes this perfect piece of jewellery.

DANISH WATCH DESIGN BY CHRISTIAN MIKKELSEN



V120LGRR



V120LGIRB



V120LGIRW



V110LGIRW

V110 Ladies

SIZE: Ø 24,5 MM

This watch is quite simply ultra-feminine. It is a piece of jewellery in itself with a focus on long, delicate lines. The hours are marked discretely, and the details on the crown highlight the sense of femininity and sophistication.

DANISH WATCH DESIGN BY CHRISTIAN MIKKELSEN



V110LGIRB



V110LGRR



NEW V110LBRRB



NEW V110LCIRX



NEW V110LCIRR



V110LCIRB



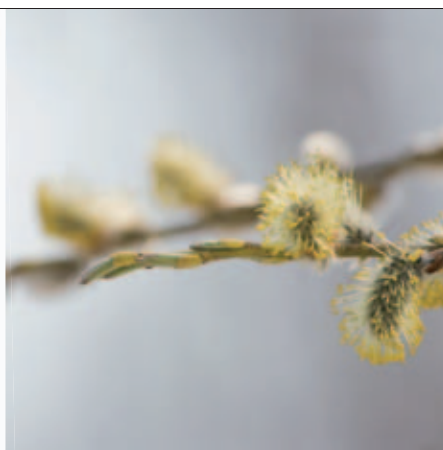
V110LCIRE



V110LCIRW



V130LGIRW



V130 Ladies

SIZE: Ø 24,1 MM

With the long wing-shaped legs emanating from its round case structure this watch is more like a piece of jewellery than a traditional watch. The elegant and feminine face of the watch is not only beautiful to the eye, but in fact also functional – it is easy to tell the time. The combination of the three-dimensional effects and the grooved index markers on the dial gives this watch an exciting appearance.

DANISH WATCH DESIGN BY LAU LIENGÅRD RUGE



V130LGGMG



V130LCIMC



V130LBMB



V130LGIRB



V130LCIRB



V130LCIRX



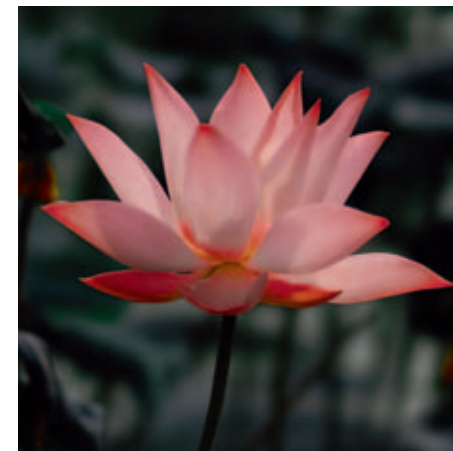
V113LCIRR



V113LGIRB



V113LGIRW



V113 Ladies

SIZE: W 25 - H 22,4 MM

True to the Obaku tradition this watch is created within a clean, simple design idiom. However, there is nothing simple about the thoughts behind the design. Notice how the straight lines of the square case are softened up by the long, feminine curved legs of the case. The simplicity of the design, as well as the sophisticated details makes the watch perfect for virtually any occasion.



V113LCIRW



V113LCIRB

DANISH WATCH DESIGN BY CHRISTIAN MIKKELSEN



V135 Ladies

SIZE: Ø 29,6 MM

It seems as if this watch is floating in space, elegantly rising above all problems on earth. The form could be inspired by the shape of a UFO, reminding us to travel through time mindfully. Core values of the minimalist design traditions, stating that less is more, ensure that the design is elegant and sophisticated in a refreshingly new way. The watch appears feminine with the small dial opening in a slim case.

DANISH WATCH DESIGN BY LAU LIENGÅRD RUGE



NEW V135LCIRX



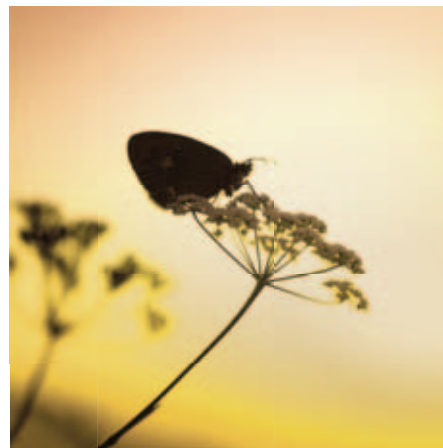
V136LCIRW



V136LCIRB



NEW V136LCIRX



V136 Ladies

SIZE: W18,4 X H34 MM

This watch is an elegant and feminine design, created in harmony with clean and minimalist design traditions. The rectangular shaped case is beautifully mounted with a fully integrated strap, which makes the watch appear simple, yet sophisticated. The edge of the case follows the curve of your wrist and makes it feel like an integrated part of you.

DANISH WATCH DESIGN BY LAU LIENGÅRD RUGE



V136LGIRB



V136LGRR



V136LBIRW



V136LGIRW

V129 Ladies

SIZE: Ø 26 MM

Ridding the design of all superfluous details and focusing on the beauty of simplicity, this watch is a manifestation of the philosophy that lies behind the design traditions at Obaku Denmark. This watch is unmistakably feminine with the small round case, the two legs that merge with the slender strap and the simple and pure design.

DANISH WATCH DESIGN BY LAU LIENGÅRD RUGE



V129LCIRB



V129LGIRW



V129LCIMC



V129LGGMG

V129 LADIES | SOLID STEEL BAND



V127LCIMC

DANISH WATCH DESIGN BY LAU LIENGÅRD RUGE



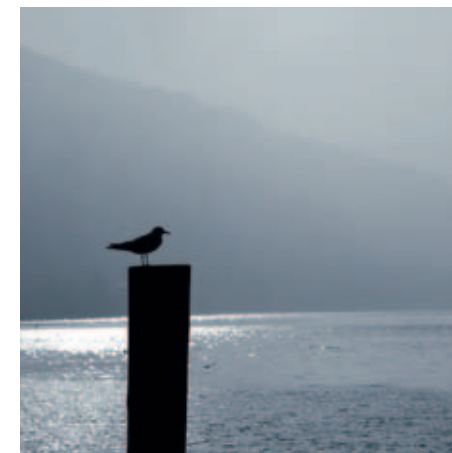
V127LGGMG



V127LBBMB



V127LCIRB

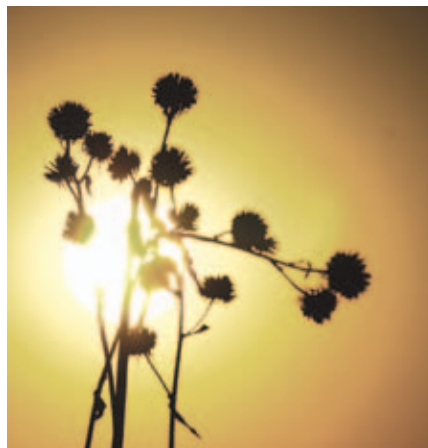


V127 Ladies

SIZE: W 21 x H 35,8 MM

This watch has a simple, clean and minimalist design. By using the same width for both the strap and the case the unbroken vertical lines give continuity and harmony. The design idea is completed by repeating the vertical lines in the brushing of the case and dial. The overall feeling is elegant composure.

DANISH WATCH DESIGN BY CHRISTIAN MIKKELSEN



V137 Unisex

SIZE: W38 x H42 MM

The completely round case looks as if it could float away if it wasn't supported by the two pillars and leather band, which elegantly frame this contemporary piece of art. The time is indicated by equally round and very subtle hour markers, which fulfill the clean look of this design.



V137UGIRW



V137UCBRB



V137UBBRB



V138LBBXB



V138LGIXB

V138 Ladies & Gents

SIZE: Ø 29/39 MM

A simple circle yet so elegant. Design does not get much cleaner than this. All disturbing details have been removed and you are left with the raw beauty of simplicity. The straps are made of the highly durable Kevlar material, which is a light fiber generally said to be five times stronger than steel on an equal weight basis. The strap beautifully frames the simple, circular beauty of this watch design.

DANISH WATCH DESIGN BY CHRISTIAN MIKKELSEN



V138GBBxB



V138GCCXB



V138 GENTS & LADIES | KEVLAR STRAP



V102GBBMB



V102GCBBR



V102GCIRN



V102GBBRB



NEW V102GBRRB



NEW V102GTJRB



V102GCCMC



V102GGGMC



NEW V102GCLMC

V102 Gents

SIZE: W 34 MM - H 36 MM

This is a very geometrical watch that is almost architectural in its design idiom and has a focus on the horizontal lines. Even though this watch has an overtly simple appearance; small, delicate details are also in focus. This is a watch in a stringent, modernist style, with a strap and case that combine in a dynamic transition from narrow to wide.

DANISH WATCH DESIGN BY LAU LIENGÅRD RUGE



V102LCCRW



V102 Ladies

SIZE: W 26,9 - H 29 MM

This is a very geometrical watch that is almost architectural in its design idiom and has a focus on the horizontal lines. Even though this watch has an overtly simple appearance; small, delicate details are also in focus. This is a watch in a stringent, modernist style, with a strap and case that combine in a dynamic transition from narrow to wide.

DANISH WATCH DESIGN BY LAU LIENGÅRD RUGE



V102LCCRB

V102LCCRR



V102LCCMC

V102LGGMG

V102LBBMB



V142GBBSB



V142LCISC



V142LCBSC



V142LBBSB



V142LGISG

V142 Ladies & Gents

SIZE: W24x29,7 / W37x42,8 MM

This watch has a stainless steel bracelet and the classic design complements the evergreen models of the Obaku collection. With its clean dial, barrel shaped case and the straight lines which continue throughout the bracelet, this watch seeks to calm the mind by leaving out all excess details.

DANISH WATCH DESIGN BY LAU LIENGÅRD RUGE



V142GCISC



V142GCBSC

THE OBAKU DESIGNERS

Obaku Denmark is an exclusive range of watches based on the desire to combine the traditions for simplicity found in both Western and Asian cultures. The watches are designed by two Danish designers, Lau Lienggaard Ruge & Christian Mikkelsen.

Lau Lienggaard Ruge is full of praise for the classic Danish designers, who are renowned for the simplicity and functionality of their work. Nevertheless, he also fully appreciates the fantastic inspiration to be found in high-tech contemporary design idioms.

"For me, the important thing is to produce a design that stands the test of time. I'm no fan of quick-fire, flavour-of-the month solutions. I want to really get to grips with a design, and focus my energy on bringing it to

fruition," he says, at the same time admitting that he is an incorrigible perfectionist. "The objective with my designs is to create products that people consider worth keeping."

Christian Mikkelsen's work builds on inspiration from a wide selection of different sources. He gets ideas from observing the delicate details found in good craftsmanship as well as the broad swathes to be found in classic designs. His extensive experience means that he is in a position to have faith in his own ideas. "I really trust my own intuition about a product, and always keep the person for whom the watch is designed in mind," he says.



Lau Lienggård Ruge (1976)
Christian Mikkelsen (1960)

ULTRA SLIM DESIGN

CASE EDGE 1 MM



V133
Solid link

V133 Gents

SIZE: Ø 38 MM

This popular watch is mounted with a stainless steel link band in a sophisticated clean look. The slim one-piece link merges perfectly into the body of the case which is elegantly curved. With a case edge of just one millimeter and a very slim total case thickness, this watch is quite a design feat. The elegant two layered dial is mounted with extremely slim numbers and indexes, which in many cases have a high contrast colour to the dial, making it easy to read the time.

DANISH WATCH DESIGN BY LAU LIENGÅRD RUGE



V133LCISC

V133LCBSC

V133LTBST
TITANIUM

V133LBBSB




V133GBBSB



V133GCBSC

V133GCISC

V133GTBST
TITANIUM

 V133GCLSC



V133GCIMC

V133GTBRB
TITANIUM

V133GCBMC



V133GBBMB



NEW V133GCLMC

V133GTIRB
TITANIUM

V133 Gents

SIZE: Ø 38 MM

With a case edge of just one millimeter and a very slim total case thickness, this watch is quite a design feat. The movement has three hands and a date and the shape is elegantly curved to create a perfect merge of the case and strap. The elegant two layered dial is mounted with extremely slim numbers and indexes, which in many cases have a high contrast colour to the dial, making it easy to read the time.

DANISH WATCH DESIGN BY LAU LIENGÅRD RUGE



V133GCBRB



V133GCIRB



NEW V133GCIRW



V133LCIMC2



V133LCIMC



V133LGGMG



V133LBBMB



V133 Ladies

SIZE: Ø 28 MM

With a case edge of just one millimeter and a very slim total case thickness, this watch is quite a design feat. The movement has three hands and the shape is elegantly curved to create a perfect merge of the case and strap. The elegant two layered dial is mounted with extremely slim numbers and indexes, which in many cases have a high contrast colour to the dial, making it easy to read the time.

DANISH WATCH DESIGN BY LAU LIENGÅRD RUGE



V133LCIRB

V133LTIRB
TITANIUMV133LTBRB
TITANIUM



DANISH WATCH DESIGN BY LAU LIENGÅRD RUGE

V133 Gents XL

SIZE: Ø 41 MM

With a case edge of just one millimeter and a very slim total case thickness, this watch is quite a design feat. The movement has three hands and a date and the shape is elegantly curved to create a perfect merge of the case and strap. The elegant two layered dial is mounted with extremely slim numbers and indexes, which in many cases have a high contrast colour to the dial, making it easy to read the time.



NEW V133XBBMB



NEW V133XCIMC



NEW V133XTBRB
TITANIUM



NEW V133XTIRB
TITANIUM



NEW V133STIRB



NEW V133SBBSB



NEW V133STBST
TITANIUM



NEW V133SCISC



NEW V133STBRB
TITANIUM



NEW V133SCIMC



NEW V133SGIMG



V133 Ladies

SIZE: Ø 23 MM

With a case edge of just one millimeter and a very slim total case thickness, this watch is quite a design feat. The movement has three hands and the shape is elegantly curved to create a perfect merge of the case and strap. The elegant two layered dial is mounted with extremely slim numbers and indexes, which in many cases have a high contrast colour to the dial, making it easy to read the time.

DANISH WATCH DESIGN BY LAU LIENGÅRD RUGE

V133 LADIES | LEATHER STRAP, MESH BAND & SOLID LINK



DANISH WATCH DESIGN BY CHRISTIAN MIKKELSEN

V122 Gents XL

SIZE: Ø 38 MM

The slightly larger 38 millimeter case turns this classic, ultra-slim design into a statement, which can not be missed. This watch is light and comfortable to wear at any occasion and the integration of the strap and case gives the watch an elegant look.



V122XTLMT
TITANIUM



V122XTTMT
TITANIUM



V122XCCRB



V122XCBB



V123LCIMC



V123LGIMG



V123LBMB



V123LTJM
TITANIUM



V123 Ladies & Gents

SIZE: Ø 28,5/38 MM

The ultra-slim design of this watch makes it light and comfortable to wear. The emphasis is on simplicity, elegance and functionality. With clear indexes and large centre-mounted hands, which are easy to tell apart, telling the time can be done by a quick glance at the dial.

DANISH WATCH DESIGN BY CHRISTIAN MIKKELSEN



V123GBMB



V123GCIMC



V123GGIMG



V123GCBMC

V123CTJM
TITANIUM



V112GCIRB

DANISH WATCH DESIGN BY LAU LIENGÅRD RUGE



V112 Gents

SIZE: Ø 40 MM

This is a very simple yet sophisticated design. The slim lines defining the body of the watch are complemented in the dial by the slim and pointy hands and hour markings. It is a newborn evergreen.



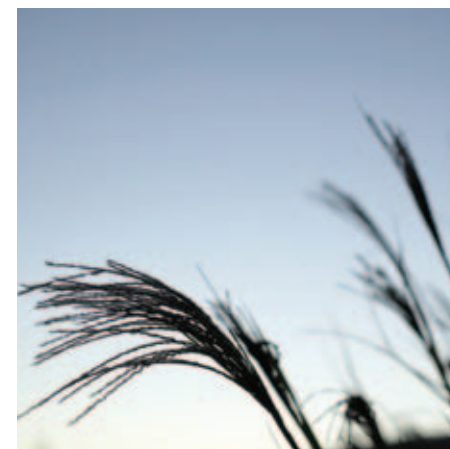
V112GBBRB

V112GCIRN



V143GCIRB

DANISH WATCH DESIGN BY CHRISTIAN MIKKELSEN



V143 Gents

SIZE: Ø 38 MM

This ultra slim watch uses a two hand movement to create a very clean and elegant appearance while at the same time making the case as slim as possible. The edge of the case and the case legs are extremely slim to complement the overall minimalist appearance of this watch, which is a true design classic. The two layered dial creates depth in this design, which is sure to be as wearable today as ten years from now.



V143GCIRN



V143GBBRB

SLIM SPORT

PERHAPS THE SLIMMEST SPORTS WATCH EVER MADE



V140
Solid link



V140GCBSC



V140LCBSC



V140LCISC



V140LBBSB

V140LTJST
TITANIUM

V140 Ladies & Gents

SIZE: Ø 34 / 40 MM

This is probably one of the slimmest sports watches in the world. Traditionally sporty watches have large bezels, thick cases and many functions and most watch designers would not think of making a sporty watch which is also slim. The rotatable bezel curves downwards towards the case, creating an incredibly slim case edge. This slim expression combined with the sporty look of the bezel, hands and dial gives this watch a unique appearance.

DANISH WATCH DESIGN BY CHRISTIAN MIKKELSEN



V140GCISC



V140GBBSB

V140GTJST
TITANIUM



V141GCBMC

V141 Gents

SIZE: Ø 41 MM

Traditionally sports watches are full of details, functions and thick bezels. This sporty looking design focuses on simplicity. Aiming to please the design lover, who also wants to convey a sporty image, this watch is a merge of the active oriented world and the minimalist design values. The watch has a rotatable dial ring and sub dials showing the day and date.

DANISH WATCH DESIGN BY LAU LIENGÅRD RUGE



V141GBBRB



V141GBMBB



V141GCIRB



V145UBBMB



V145UCBMC



V145UCIMC

V145 Unisex

SIZE: W36 X H45 MM

This watch is for the casual design lover, who likes to stand out in a crowd. The curved lines of the stainless steel case, sloping upwards towards the clean design of the dial, are sure to make a statement on any wrist. The classic black and white tones are complemented with a splash of colour on the tip of the second hand.

DAY-DATE

DANISH WATCH DESIGN BY LAU LIENGÅRD RUGE



V145UBBSB

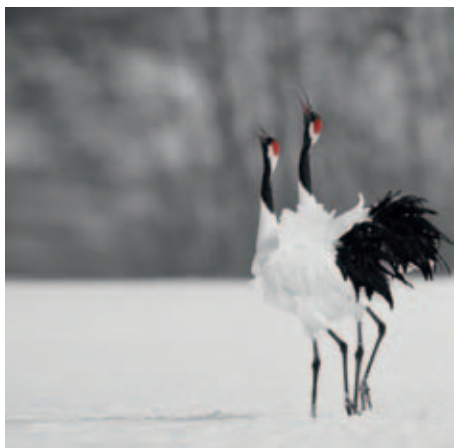


V145UCISC



V145UCBSC

V145 UNISEX | MESH BAND AND SOLID LINK



V100GCIMC



NEW V100GBRB1



V100 GBBMB

V100 Gents

SIZE: Ø 38 MM

This is an elegant watch for those who appreciate purity of style. The design of this watch makes the strap and the case seem to almost blend into each other. This watch provides an active, sporty look in which all unnecessary detail has been pared away and where the sharp, narrow lines have a recurrent place in the overall design idiom.

DAY-DATE

DANISH WATCH DESIGN BY CHRISTIAN MIKKELSEN



V100GCIRN



V100GCIRB

V100 GENTS | LEATHER STRAP & MESH BAND



DANISH WATCH DESIGN BY LAU LIENGÅRD RUGE

V126 Gents

SIZE: W 37 x 43,5 MM

A chronograph watch with three sub-dials and a date indicator set into the main dial. The many details on the dial and the technical features give this watch a masculine expression. At the same time the thin contour lines on the dial, the architectural character and the contrasting colours ensure that the design is still elegant and clean. The push buttons on the side of the case complement the overall design and make it easy to operate the chronograph.

CHRONOGRAPH



V126GBMB



V126GCIMC

V126 GENTS | MESH BAND



DANISH WATCH DESIGN BY CHRISTIAN MIKKELSEN

V134 Gents

SIZE: W40 x H52,8 MM

A new and masculine design, containing lots of interesting details, is embodied in a classical shape. The 40 millimeter wide case is proportionate to the slim depth of this handsome watch, which is mounted with a heavy mesh band. Incredibly, a sturdy and sporty look is combined with a sophisticated and elegant feeling in this watch, which stands out within the Danish design traditions. The dial is mounted with 12 applied indexes which match the hands and are integrated into the border of the dial. The large calendar function makes it easy to see the date.



V134GBMB

V134GCBMC

V134GCIMC





DANISH WATCH DESIGN BY CHRISTIAN MIKKELSEN



V124 Gents

SIZE: Ø 41,5 MM



V124GCIMC

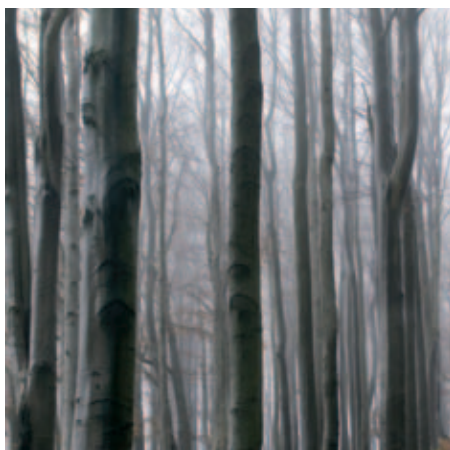


V124GCBMC



V124GBMB

A classic case paired with modern details and materials gives this watch a youthful and fresh appeal. With its heavy mesh band and the asymmetrical placement of the sub-dial, which indicates the date, this watch stands out as fashionable and unconventional in its design. The multileveled main dial, sub-dial and index markers create an impression of depth and also improves legibility.



V132XBBMB



V132XCIMC

V132 Extra Large Gents

SIZE: Ø 43,4 MM

This watch is the perfect blend of a traditional watch design and new, contemporary design idioms. On one hand it is a large, sturdy looking watch and on the other hand the design is extremely slim and elegant. The sporty size of this watch is intriguingly mixed with the classic, simple shape of the case. The watch is mounted with a fully integrated strap or mesh band.



V132XBBRB



V132XCIRB



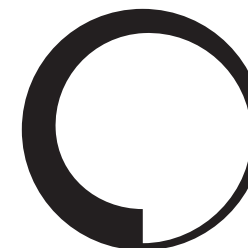
V132XCIRN



DANISH WATCH DESIGN BY CHRISTIAN MIKKELSEN

V132 GENTS | LEATHER STRAP & MESH BAND

SPECIFICATIONS



HAND POLISHED STAINLESS STEEL CASES, BUCKLES AND BANDS

All cases, buckles and bands are made in the best solid stainless steel material for watch manufacturing. The fine 316L steel is made in Japan and all cases are carefully hand polished by the best craftsmanship standards.

glass

GLASS

All watches are mounted with the newly invented Titan glass which is known from the mobile industry. The Titan glass is extremely crack resistant.

COATINGS

All watches in gold or black are coated with a titanium coating which is the newest and most advanced technique for long lasting coatings. The gold coating is a mixture of titanium and gold which is merged with the stainless steel base material in a fusion process in a vacuum chamber.

STRAPS

All straps are made in genuine leather and several versions are assembled in multiple layers which gives the straps a rich structure and identity. movements

MOVEMENTS

All watches are assembled with original high quality movements made in Japan with the highest precision.

ECOLOGICAL MOVEMENTS

Most models are equipped with special environmentally friendly movements. The movements use the new SPRON Battery which is a silver oxide battery free of mercury and lead. By applying a high precision anode using a surface process technology and new material for the cathode, silver and lead are completely removed from the battery. (The movement can also use ordinary batteries as well).

WATER RESISTANCE

All watches are at least 3ATM water resistant and have been individually tested. The watches are not suitable for diving or swimming.

GIFT BOXES

The gift box for the Obaku Denmark watches is a sculpture in itself. It supports the entire concept of the Obaku philosophy of harmony and minimalist design. The box is designed by Lau Liengaard Ruge.

THE "PHOTOS" ARE NOT PHOTOS

The "photos" of most of the watches in this catalogue were made long before the actual watches were produced. The "photos" are actually not photos, but computerized visualizations which are the original drawings made by the designers Lau Liengaard Ruge and Christian Mikkelsen. There might be small variations between the computerized drawings and the actual watches.

ZEN PHILOSOPHY
DANISH WATCH DESIGN

